

# Talamon Tower

Region: Tuscany Sleeps: 8 - 12

## Overview

The historic Spanish tower was originally erected to protect against the Saracen invasions, but today stands as a totally unique holiday rental the breathtaking views of the Tuscan coast from every corner of Talamon Tower.

As you proceed down the private road that leads to the tower, you'll be blown away by views of verdant countryside meets turquoise seas and fishing villages and bustling harbours dotting the horizon. Upon entering the property you'll be struck by the meticulous attention to detail and traditional yet luxurious atmosphere.

Staying in the ancient watchtower is a truly special experience, with its own four poster bed, grand fireplace and even a small terrace offering exclusive views from the highest point of the building.

Close to the main villa is a lovely annex which is fully air conditioned and has a sitting room and two further double bedrooms (one with four poster bed) each with ensuite shower room.

The first floor holds a luminous lounge with incredible views, and comfortable sofas and armchairs for relaxing round with friends or enjoying a DVD on the 32 inch LCD TV. This room leads out onto a spectacular terrace with dining tables and chairs for eating out of an evening, watching the sunset on the views that reach all the way out to the islands of Giglio and Montecristo on the horizon.

Guests also have use of a private 6m x 4m swimming pool, and direct access to a private rock beach shared only with one other villa.



## Facilities



# Interior & Grounds

On entering the front door, to your right you come across a wide open space, a dining area with fireplace, and two double bedrooms each with independent bathrooms: one with a bathtub; the other with a shower.

Continuing on, along the entrance corridor and to the left of the dining room, there is a fully equipped modern kitchen. At the end of the corridor is a third bedroom, also with its own bathroom. A staircase from the corridor leads to the first floor with an enormous air conditioned living room with fireplace. It is the perfect spot to relish the magnificent 180° panoramic views. The living-room is furnished with comfortable lounge chairs and couches on one side of the room, while on the other side, there is an antique wooden table which can seat up to 8 people. From the living-room, there is access to a splendid terrace which is divided into two areas with a dining area and deckchairs for relaxation and sunbathing.

The view from the terrace is spectacular; it captures Porto S. Stefano and the hills of Mount Argentario; Talamone, with its charming walled town; the hills of the Uccellina Natural Park; as well as the islands of Giannutri, Giglio and Montecristo, a famous marine park.

On returning to the ground floor, there is a small staircase which leads to the lookout tower. This has also been restored, and is divided into two floors. It is made up of a double bedroom, with small bathroom containing shower facilities, walk-in wardrobe and living-room corner.

From the second floor, guests have access to a small terrace. The guest house next to the tower has been remodelled to provide a living room and two double bedrooms. Each bedroom has its own private bathroom with shower and air conditioning.

Talamon Tower is equipped with satellite television, telephone line and internet. Every window has mosquito nets and every bedroom has ceiling fans. Talamon Tower is divided into two areas: One has been transformed into a splendid panoramic lookout, amidst the greenery of the garden, the other is equipped with deckchairs. In addition, Talamon Tower has its own walking trail which leads to the sea and a sunbathing deck. Talamon Tower is the perfect place to sit and enjoy the wonderful sunshine, take a dip in the swimming pool, or to enjoy the company of good friends and a glass of wine around the barbecue after sunset.

## Rooms are arranged as follows:

### Ground floor:

- Little dining room with fireplace table and chairs
- Double bedroom (which can convert to a twin on request) with ensuite



bathroom only shower, basin, bidet and w.c

- Double bedroom(can convert to twin on request) with ensuite bathroom with bathtub, basin, bidet and w.c.
- Kitchen with cooker (6 gas rings), oven, fridge /freezer, dishwasher
- Double bedroom with bathroom with bath / shower, basin, bidet and w.c.

**First floor:**

- Living room with dining table and chairs, settees, armchairs, fireplace, satellite television and Dvd player
- Kitchenette with 2 ring hob and fridge
- Panoramic terrace.

**Tower wing:**

- First floor a double bedroom with a fireplace and ensuite bathroom
- Level above has shower and dressing room

**Annex:**

- 2 double bedrooms each with ensuite shower room with shower, basin, bidet and w.c
- Sitting room
- Air conditioning throughout annex.

**General facilities:**

- Air conditioning in all the bedrooms except the tower's bedroom
- Ceiling fans in bedrooms
- Swimming pool > Terraces
- Washer/dryer
- Barbeque
- Wi Fi Internet access in the main villa
- Fly screens
- Maid service 6 days a week
- Mid week linen change
- Pool towels provided
- Chef and extra services available on request
- Ipod docking station



## Location & Local Information

Tucked away in a magical corner of Southern Tuscany, this property is perched on top of a cliff which overlooks the sea, not far from sites of historical interest. The tower is surrounded by the authentic natural wonders of the Maremma Natural Park.

Today, the Maremma is the perfect choice for the romantic traveler. It offers a mixture of ancient civilizations, enduring local traditions, lush landscapes and numerous nature reserves. All of this is accompanied by an outstanding culinary and wine-making tradition.

Each visit to the Maremma is a new experience with new discoveries. There are long stretches of fine sandy beaches surrounded by lush pine forests, tiny sweetly-named coves, crystal-clear water, deserted beaches, uncontaminated islands in an enchanted sea, villages and castles. The gentle landscape is brimming with history and natural wonders.

The area is also a popular playground for the rich and famous with gorgeous yachts moored in the harbours next to traditional fishing boats and the countryside is rich in flora and fauna, and the Maremma can be explored on foot, horseback and bike.

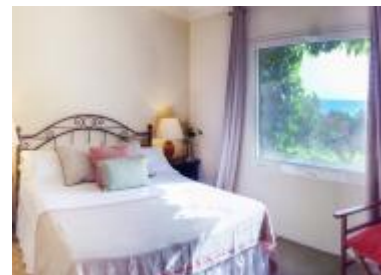
The town of Fonteblanda is just over 1 km away and has a variety of shops, and facilities. When you can tear yourself away there are many interesting towns to explore within easy driving distance, as well as a host of pretty beaches along the coast.

The region offers a special and inviting atmosphere for all visitors at any time of the year. The coast has much to offer tourists with modern sports and professionally organized scuba diving schools that are attended by diving enthusiasts throughout the year. Traditional local skills that have not been forsaken include expert maestri d'ascia (boat builders). Active guests can explore, go trekking, ride mountain bikes and enjoy exhilarating excursions on horseback in the area.

Few other parts of Italy have so many charming villages that are so easy to reach from the coast. Often, these villages have their origins in the Etruscan or Roman civilizations and are veritable gems of Medieval architecture.

The region is extraordinarily rich in culinary tradition with both sea and inland specialties. Everything is accompanied by the Mediterranean aroma of olive oil and famed wines.

The Maremma is one of the most beautiful and magical sites in Tuscany. Journeying through it one feels nature, creativity and the essence of the



Maremma itself all around. The land is alive with testimonies of the Etruscan civilization where parishes and villages still retain the flavour of medieval art.

Maremma means being together with people who are always welcoming and ready to socialize, involving travelers in a unique and always surprising atmosphere.

One of the most prized golf courses in Tuscany is there. Guests can demonstrate skill while admiring the beauty surrounding the fairways.

**Located Near:**

- Volterra: 140 km
- San Gimignano and its Towers: 130 km
- Siena – Piazza del Campo – The Chianti wines: 100 km
- Pisa: 180 km
- Florence: 170 km
- Rome-Fiumicino: 150 km

# Terms & Conditions

- Security deposit: €1000. This is paid prior to arrival and will be refunded in full after departure subject to damage inspection.
- Arrival time: 4.00 p.m. and 7.00 p.m.
- Departure time: Before 10.00 a.m.
- Energy costs included?: Only energy is included.
- Linen & towels included?: Included.
- Pets welcome?: yes
- Changeover day: Saturday
- End of stay cleaning included?: Please enquire.
- Insurance: It is recommended that all guests take out insurance to cover against potential cancellation and any accidental damage caused during your stay at the property.
- Other Ts and Cs: - Utilities and are included in the rental price (except heating). - Heating: Heating is an additional cost.